

# "The Star of Bethlehem"

## Sacred Song

S. ADAMS

Andante moderato



*a tempo*



*a tempo*



*rall.*

*a tempo*

*Più mosso.*



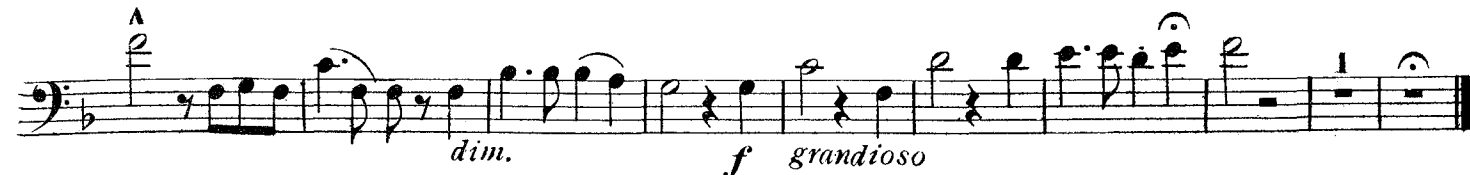
*Poco animato*



*a tempo*



*Tempo I.*



# "The Star of Bethlehem"

## Sacred Song

for Cornet, Trombone or Baritone.

S. ADAMS.

arr. by Theo. Moses-Tobani.

Andante moderato.

Andante moderato.

sostenuto.

*p*

*cresc.*

*ff*

*p*

*rall.*

*rall.*

*a tempo*

*a tempo*

*p*

*poco accel.*

*cresc.*

*cantabile*

*fp*

# Piano

First system of the piano score. It consists of three staves: a single treble staff at the top and a grand staff (treble and bass) below. The music is in a key with one flat and a 3/4 time signature. The top staff begins with a melodic line marked *tranq.* and *f*. The grand staff features a complex accompaniment with chords and moving lines. The system concludes with a *p* dynamic marking and the instruction *sosten.*

Second system of the piano score. It consists of three staves. The top staff has a melodic line marked *rall.* and *a tempo*. The grand staff features a complex accompaniment with chords and moving lines. The system concludes with a *f* dynamic marking.

Third system of the piano score. It consists of three staves. The top staff has a melodic line marked *dim.* and *Più mosso.*. The grand staff features a complex accompaniment with chords and moving lines. The system concludes with a *p* dynamic marking and the instruction *Più mosso.*

Fourth system of the piano score. It consists of three staves. The top staff has a melodic line marked *dim.*. The grand staff features a complex accompaniment with chords and moving lines. The system concludes with a *p* dynamic marking.

Fifth system of the piano score. It consists of three staves. The top staff has a melodic line marked *poco animato.*. The grand staff features a complex accompaniment with chords and moving lines. The system concludes with a *p* dynamic marking.

# Piano

First system of the piano score. The right hand has a melodic line with a fermata over the first measure. The left hand has a rhythmic accompaniment. Dynamics include *cresc.*, *a tempo*, *f*, and *p*. The tempo marking *affret. poco a poco.* is at the end.

Second system of the piano score. The right hand features a complex, multi-measure rest followed by a melodic phrase. The left hand continues with a rhythmic pattern. Dynamics include *a tempo*, *f*, and *p*.

Third system of the piano score. The right hand has a melodic line with a fermata. The left hand has a rhythmic accompaniment. Dynamics include *rall.*, *Tempo I.*, and *ffp*.

Fourth system of the piano score. The right hand has a melodic line with a fermata. The left hand has a rhythmic accompaniment. Dynamics include *con fuoco.*, *f*, *dim.*, and *p*.

Fifth system of the piano score. The right hand has a melodic line with a fermata. The left hand has a rhythmic accompaniment. Dynamics include *f grandioso.*, *f*, and *ff*.